

Mulbury office map

Lymm Office

Mulbury Homes
Great Oak Farm
Mag Lane
Lymm
Cheshire
WA13 0TF

Route 1: From the North and South

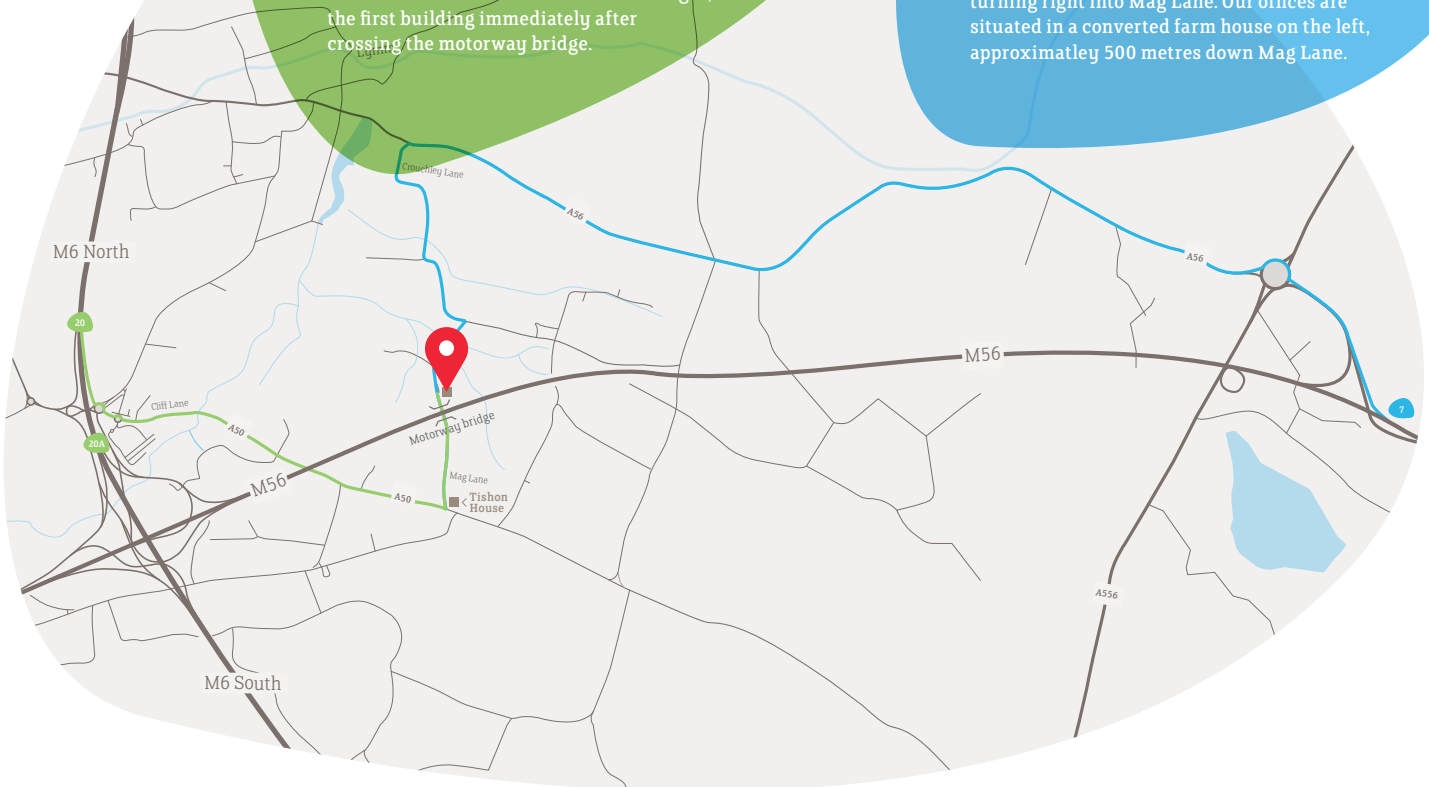
Exit the M6 at J20 and follow signs for the A50 (signposted Knutsford and Macclesfield) passing the entrance to Lymm services on your right.

Follow A50 for approximately one mile before turning left into Mag Lane (please note Mag Lane does not have a street sign - it is the left before Tishon House).

Our offices are situated 500 meters down Mag Lane in a converted farm house on the right, the first building immediately after crossing the motorway bridge.

Route 2: From the East and West (including Manchester)

Exit the M56 at J7 and follow signs for the A56 (signposted Lymm). After approximately three miles turn left into Crouchley Lane (signposted High Legh) and follow for a further mile before turning right into Mag Lane. Our offices are situated in a converted farm house on the left, approximately 500 metres down Mag Lane.



Manchester Office

3 Piccadilly Place
Manchester
M1 3BN



Manchester (Mulbury City office)

Our Manchester office is located a short walk away from the main entrance of Manchester Piccadilly train station at number 3 Piccadilly Place. Parking is available in the Piccadilly Place Car Park which is situated directly under the office building with spaces available across three underground levels.



MULBURY

mulbury.co.uk